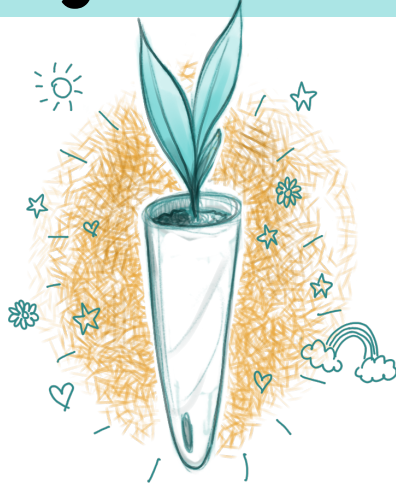


Plug Planting Guide

brought to you by **Pipilo Native Plants**

Behold the cone-tainer (or "cone").

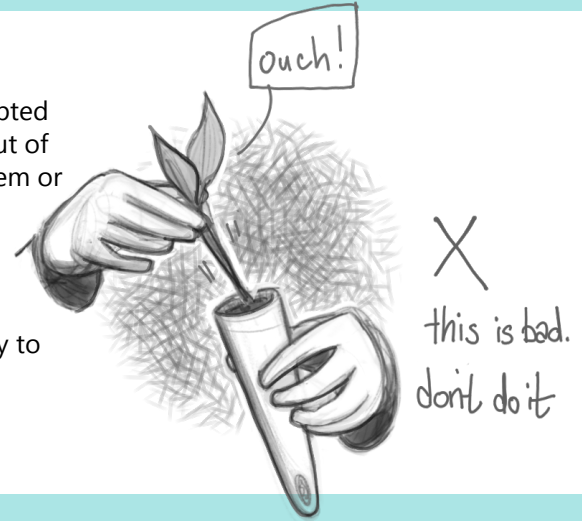
It allows for deep roots that establish well, and for ease of growing and planting. Plants grown this way are often called "plugs."



You might be tempted to pull the plant out of the cone by the stem or leaves.

DON'T DO THIS.

It is the easiest way to damage the plant.



Removing plug from cone - the right way

The goal is to keep the root system intact and attached to the above-ground portion of the plant!



1) Knead cone to loosen root plug



2) Up-end into open palm. You may need to tap or shake (like getting ketchup out of a bottle.)



3) Catch root plug in palm



Some species, especially those with taproots, won't fill the cone tightly and will lose soil from the roots when removed.

THIS IS OK.

The roots are intact. After planting, pack soil gently but firmly in the hole to ensure roots have good soil contact.

Putting it in the ground

Make your hole the same depth and slightly wider than the plug. Place plug in prepared hole, top level with soil surface. Tamp soil gently around the plug to remove air pockets. Water thoroughly.

A quick way is to sink a shovel to the depth of the plug, then wiggle it back and forth a few times. Insert plug, remove shovel, and firm the displaced soil back around the plug.

If roots are very tight, roughen them gently or use a knife to score vertically in a couple places

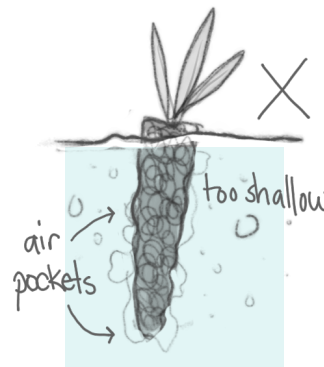
Just Right: The top of the plug is equal to the soil surface. Soil has been backfilled gently but firmly to avoid air pockets. A very shallow layer of soil is dusted on top to prevent drying.



Tip: give your planting area a deep soak before you start, and you can easily plant a couple plugs a minute using this method.

Planting Mistakes

Air Pockets: Roots don't have good soil contact and will dry out or fail to establish.



Too Shallow: the exposed top of the plug will wick away moisture and dry out the whole root system. This will kill the plant.



Too Deep: The crown of the plant will rot. This will also kill the plant.